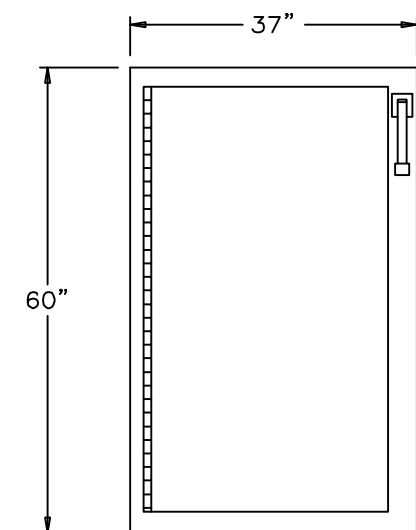
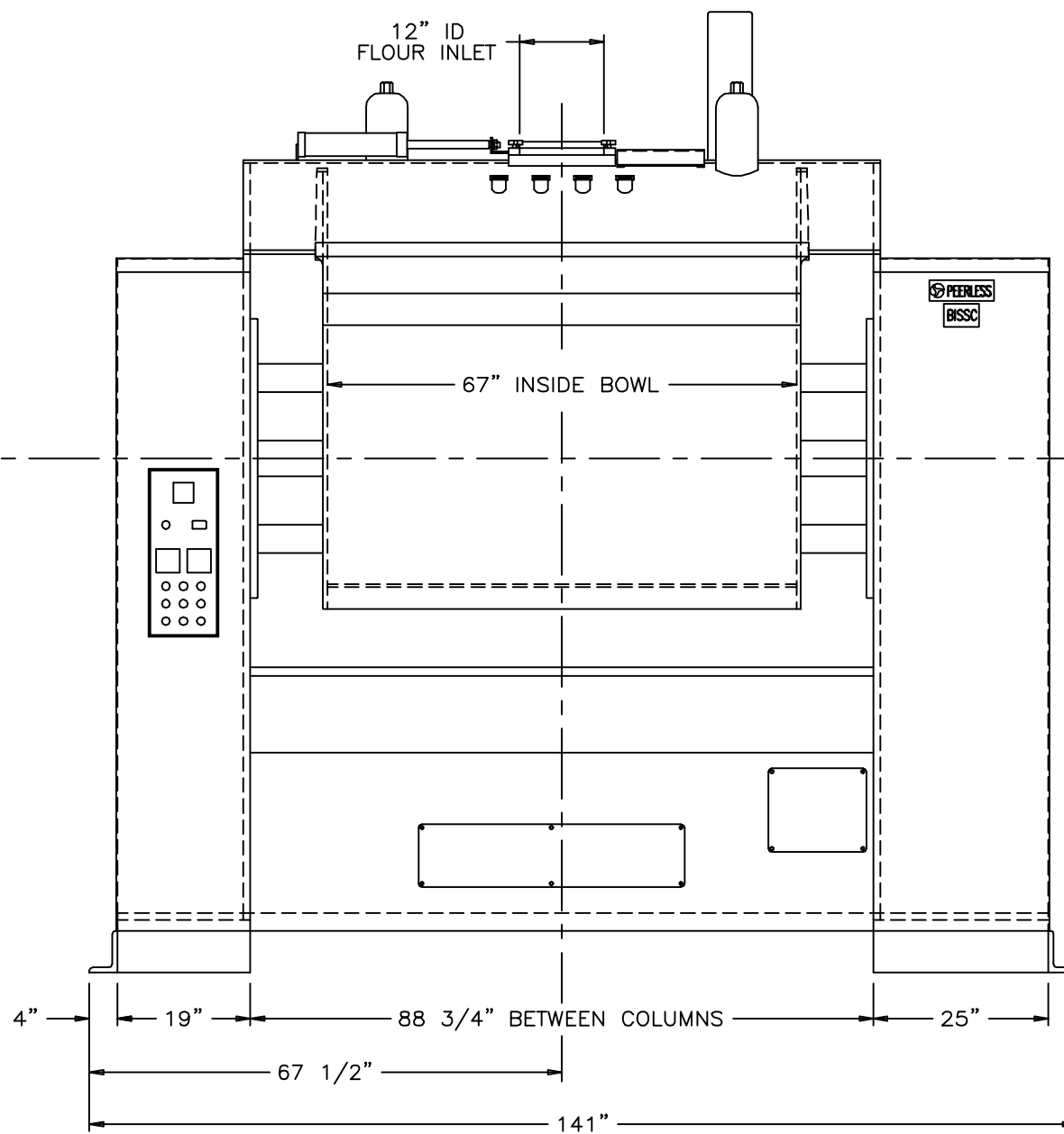
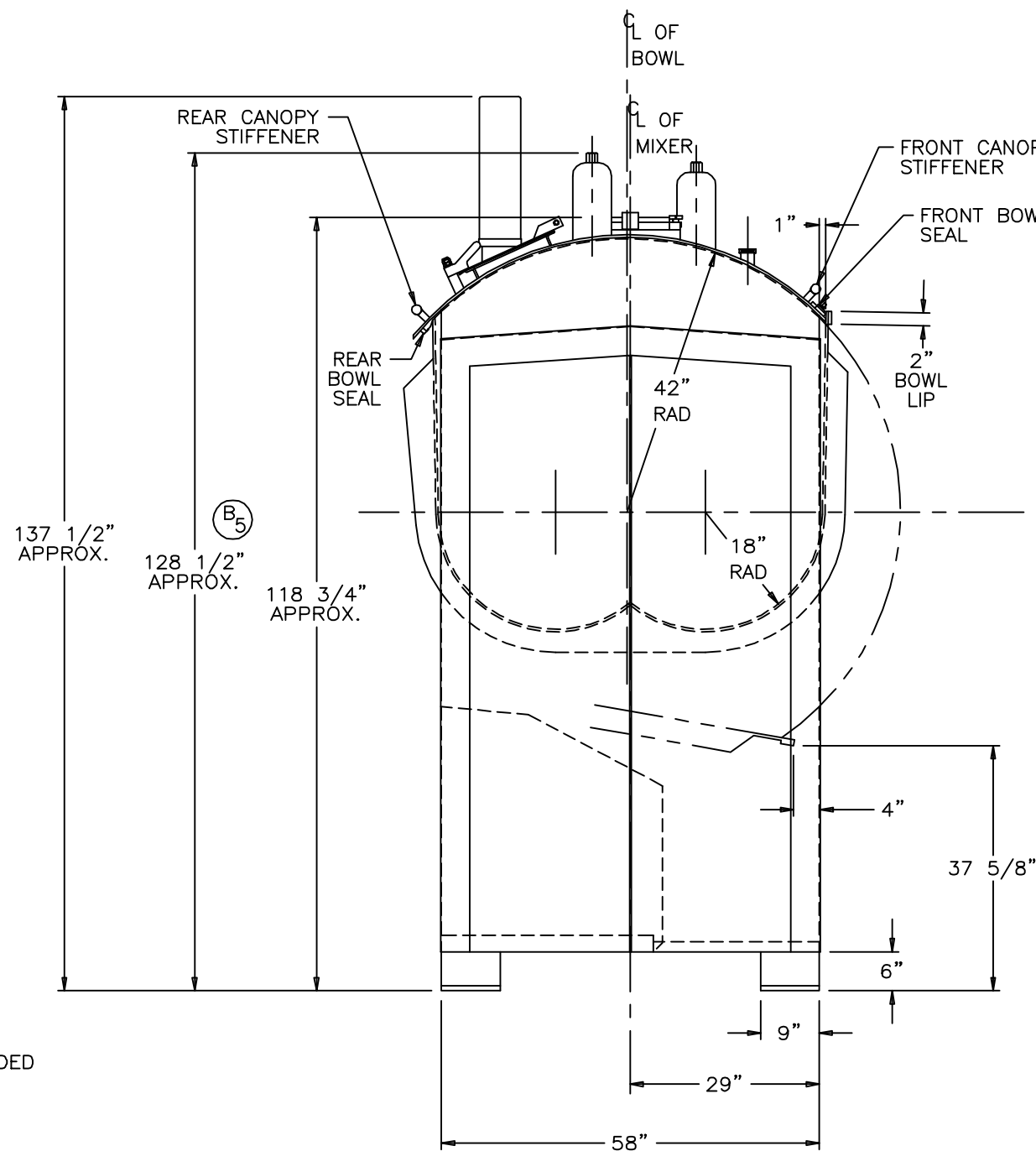
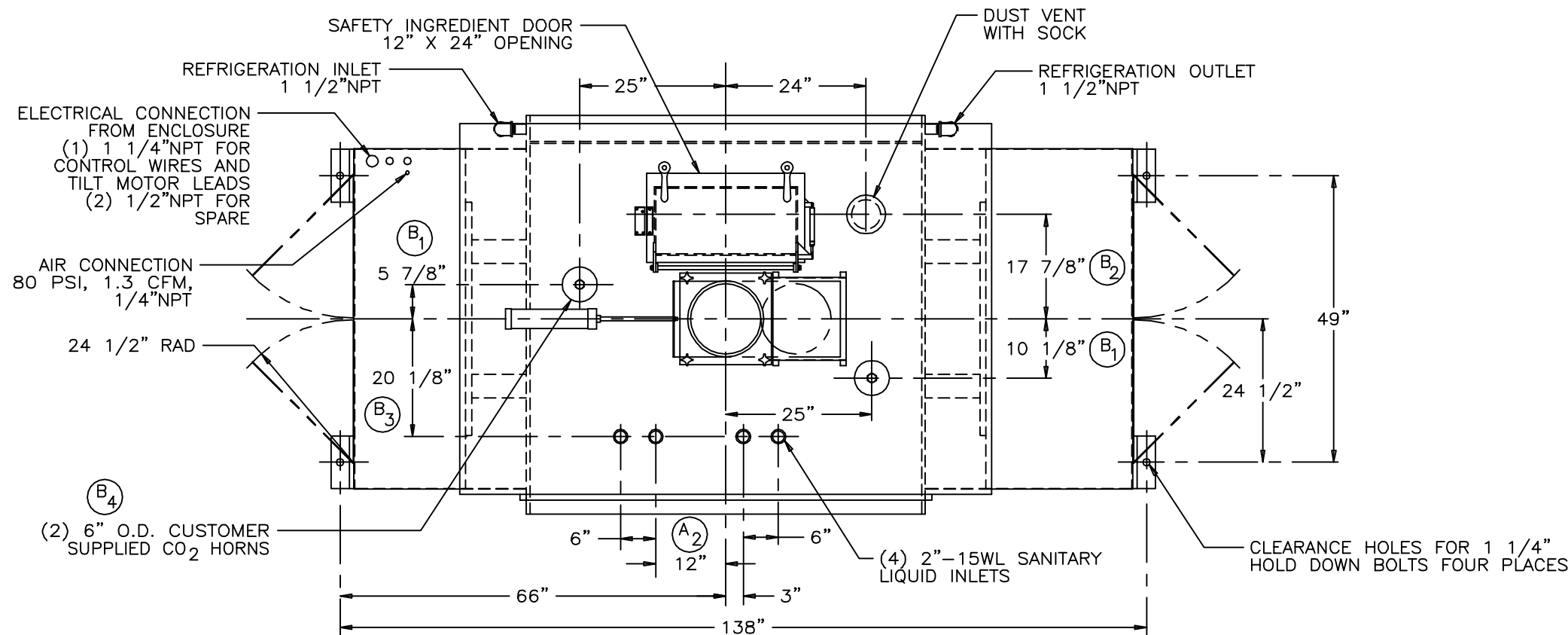


MIXER FEATURES:

150/75 HP 1800/900 RPM TEFC SANITARY DRIVE MOTOR.
460 VOLT 60 HERTZ 3 PHASE WITH FULL 115
VOLT MAGNETIC CONTROLS.
NEMA 4X STAINLESS STEEL STARTER ENCLOSURE WITH CIRCUIT BREAKER
AND PROGRAMMABLE LOGIC CONTROLER (AB SLC 500).
SOLID STAINLESS STEEL BOWL ASSEMBLY.
SOLID STAINLESS STEEL BOWL COVER.
SOLID STAINLESS STEEL AGITATOR AND SHAFT.
SOLID STAINLESS STEEL WELDED IN DRIP PAN/FRONT PANEL.
SOLID STAINLESS STEEL EXTERIOR.
SOLID STAINLESS STEEL LIQUID COOLING JACKET ON BOWL SHEET.
AGITATOR SPEEDS: 40 RPM LOW 80 RPM HIGH.
SANITARY REMOVABLE SHAFT SEALS.
HIGH AND LOW SPEED JOG OPERATION.
SINGLE END CHAIN DRIVE.
AUTOMATIC ELECTRIC CHAIN OILER.
HYDRAULIC POWERED BOWL TILT - 100°.
ELECTRONIC DIGITAL TIMERS - (HIGH SPEED AND SLOW SPEED).
ELECTRONIC DIGITAL BOWL THERMOMETER.
SAFETY SWITCHES ON END DOORS.
SAFETY INGREDIENT DOOR - 12" X 24" OPENING.
FRONT AND REAR BOWL SEALS.
FRONT AND REAR CANOPY STIFFENERS.
MANUAL CENTRAL LUBRICATION SYSTEM.



REMOTE MOUNTED NEMA 4X
ELECTRICAL ENCLOSURE
12" DEEP

PEERLESS MODEL DA650 DOUBLE SIGMA ARM MIXER

FOR MONDO BAKING CO. - ROME, GA
CMO No.: 97006
P.O. No.: 2900-1408

NOTE:

A MINIMUM OF 32" IS NEEDED
BEHIND MIXER TO REMOVE
DRIVE MOTOR.

| | | | | | |
|--|----------------------|------------------|---------|-------|-------|
| PEERLESS MACHINERY CORPORATION SIDNEY, OHIO | | | DCR No. | DR BY | CK BY |
| TOLERANCES (UNLESS OTHERWISE SPECIFIED) | | | 3513 | KR | DT |
| DECIMAL .XX= ±0.1 | ANGLES ±1° | FRACTIONAL ±1/32 | 5/1/97 | B | |
| .XXX= ±0.05 | BREAK ALL EDGES | | | | |
| MATERIAL | DRAWN BY | APPROVED BY | | | |
| | KR | DT | | | |
| SCALE | TITLE | | | | |
| 1:16 | CERTIFIED DATA SHEET | | | | |
| DATE | DRAWING NUMBER | FILE NUMBER | | | |
| 3/4/97 | CDS-1128 | D37-54 | | | |